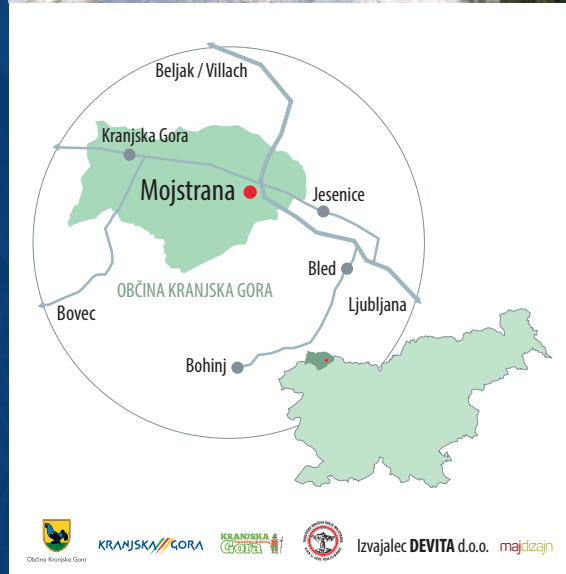


Ferata Mojstrana



Lastnosti / Characteristics

SLO športna, zelo težka zavarovana plezalna pot, strmi in zahtevni odseki, mestoma velika izpostavljenost

EN sport, very difficult and secured via ferrata, steep and demanding, some sections very exposed

višina / height	180 m
dolžina poti / route length	250 m
orientiranost stene / face orientation	SV/NE
dostop / access	10 min
plezanje / climbing	1 h
sestop / descent	30 min

klic v sili / emergency call 112

**Uporaba na lastno odgovornost!
Use at your own risk!**

Izposoja opreme / Equipment Rental

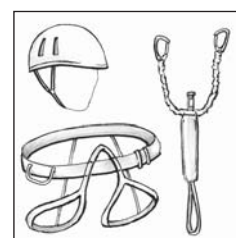
**Slovenski planinski muzej
Slovenian Alpine Museum**

Triglavska cesta 46, 4281 Mojstrana
T. +386 (0)8 380 67 30
E. info@planinskimuzej.si

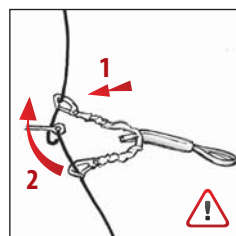


Najem vodnika / Hire a Guide

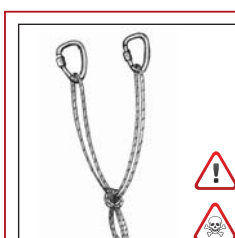
**Slovenski planinski muzej
Slovenian Alpine Museum**



Obvezna oprema
Čelada, plezalni pas,
samovarovalni komplet
Minimum equipment
Helmet, harness, via ferrata kit

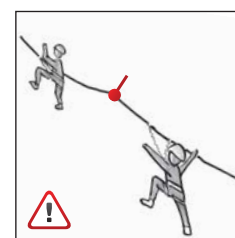


Samovarovanje
Neprekinjeno varovanje
s pomočjo samovarovalnega
kompleta.
Self-protecting
Continuous use of carabiners
linked onto steel cable.



NIKOLI NE UPORABLJAJTE POMOŽNE VRVICE, VRVI ALI NESKONČNE ZANKE NAMESTO SAMOVAROVALNEGA KOMPLETA – SMRTNO NEVARNO V PRIMERU PADCA.
NEVER USE AN AUXILIARY CORD, A ROPE OR A SLING INSTEAD OF A SELF-PROTECTION KIT – LIFE-THREATENING IN CASE OF A FALL.

Gibanje po ferati
Samo 1 oseba med dvema klinoma!
Climbing
Only 1 person between two pitons!



Pomembno
Obvezna uporaba testiranega samovarovalnega kompleta!
Important
Approved self-protection kit (via ferrata kit) is mandatory!



**Ne oklevajte pri najemu vodnika!
Do not hesitate to hire a guide!**

Pomembno / Important

SLO Vstop na plezalno pot je prepovedan neizkušnim in mladoletnim brez spremstva polnoletne osebe. Ne vstopajte v primeru neviht, snega ali ponoči. Za sestop nikoli ne uporabljajte lažje zavarovane plezalne poti. Sestopajte po označeni gozdni poti.

EN Entering via ferrata is prohibited for inexperienced persons and for the minors unaccompanied by adults. Do not enter via ferrata in stormy weather, during snow fall, or at night. Never use the easier via ferrata for a descent. Use a nice and easy forest trail instead.